

ADA GCS-5 GUITAR CABINET SIMULATOR / DI USER MANUAL



The GCS-5 is a Direct Injection (DI) box with user adjustable guitar cabinet simulations and a headphone output, designed for the studio, stage and silent practice. The GCS-5 is an all-analog circuit that runs on a standard 9-volt AC adapter (ADA Part Number 240013G5) or a pedal board power supply rated at 200mA or more.

- Turn any full-range passive or powered monitor speaker or sound system into a dynamic guitar cabinet
- Record directly from your pedal board without speakers or microphones or use the HEADPHONE OUTPUT for silent practice
- Get guitar cabinet feedback from your stage monitor
- Connect directly to the output of your power amp by inserting the GCS-5 between the power amp output and your speaker cab or load box
- Full frequency range DI box in FULL RANGE mode
- Real cabinet resonance at all levels and driver compression at high levels adds an organic depth and realism to your guitar tone

CONTROLS

- Selectable VINTAGE (alnico) or MODERN (ceramic) speaker character. We have focused on the two extremes of speakers, the alnico (Jensen) and the ceramic (Celestion and Eminence)
- Selectable AMERICAN or BRITISH Speaker cone types for high-mid coloration
- Selectable SEALED or OPEN BACK cabinet types to emphasize the cabinet's natural resonance between low and mid frequencies
- Selectable 12" or 10" speaker size
- Variable MICROPHONE PLACEMENT control to "position" the mic at the EDGE for deep or CENTER for bright frequency responses
- ¼" phone jack INPUT with a direct, un-buffered PASS THROUGH ¼" phone jack. This effectively splits the signal to feed both a guitar amplifier and a mixing console or for connecting a speaker cabinet or your load box
- POWER AMP DIRECT CONNECT with 20dB INPUT PAD, allows for inserting the GCS-5 between your power amp output and your speaker cabinet or load box.
- Balanced OUTPUT at LINE LEVEL with a GROUND LIFT switch for Pin 1
- ¼" HEADPHONE OUTPUT with a VOLUME control for 16 to 300 Ohms.

HOOK-UP

We do not recommend that you plug your guitar directly into the INPUT of the GCS-5 without plugging first into an effects pedal or buffer. The GCS-5 accepts signal levels from pedal boards (guitar level) and preamp outputs (line level) or (with the INPUT PAD switch "IN" to 20dB PAD), power amp levels. Please note that the GCS-5 is NOT A LOAD BOX, and the power amplifier must remain connected to the speakers or have a proper impedance load connected to it in place of the speakers. Preamp, line level and pedal board level signals can also be connected to the INPUT of the GCS-5 when the 20dB INPUT PAD is switched out. The GCS-5's HEADPHONE output has a VOLUME control so you can listen to the cabinet simulation in total isolation. Be sure to **USE ONLY STEREO HEADPHONES** rated between 16 and 300 ohms impedance to ensure proper performance.

USING THE BALANCED OUTPUT

The GCS-5 has both single-ended ¼-inch phone jack and balanced XLR OUTPUTS, and both work at the same time. For most sound systems, the balanced output is preferred because it avoids common audio problems such as ground loops, signal bleed and degradation. The GROUND LIFT switch, which is located on the back panel, is used to isolate the signal ground of your equipment coming into the GCS-5 from the signal fed to the console. This avoids line frequency hum in your audio signal. The XLR balanced output is at line level only, and the shield from the XLR cable is connected to the GCS-5 enclosure.

SPECIFICATIONS

INPUT IMPEDANCE: 105k Ohms	External Power Supply: 9VDC 200mA 2.1mm pin
OUTPUT IMPEDANCE: 1000 Ohms	Shipping weight: 1.6 lbs
HEADPHONE OUTPUT: 16 to 300 Ohms	Dimensions: 3.35" (w) x 4.2" (l) x 1.8" (h)

There are many ways to use the ADA GCS-5, and the following are the most common uses.

1. Go direct to the house sound system from your pedal board for live performances.



Diagram 1: Guitar to pedal board to GCS-5 to console to monitor speakers and house speakers – no stage amp

2. Take your guitar signal from your power amp output and cabinet and send it to the main sound system.



Diagram 2: Guitar to pedal board to GCS-5 split via the THRU jack to your stage amp and the processed signal to the house sound system

3. Listen to what your pedal board will sound like through a guitar speaker cabinet on headphones.



Diagram 3: Guitar to pedal board to GCS-5 to your headphones.

4. Using an amp head and sending the preamp out or effects send to the GCS-5 for feed monitoring.

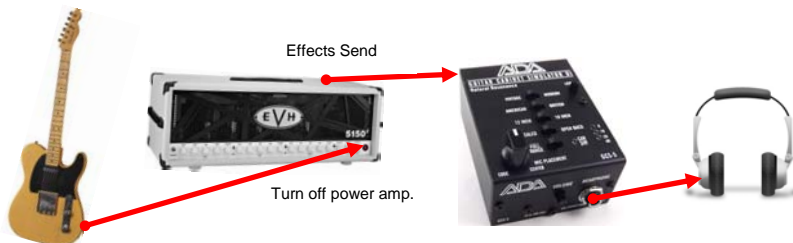


Diagram 4: Guitar to amp head to GCS-5 to the HEADPHONE output for monitoring with cabinet simulated tone.

TECHNICAL SUPPORT

1. What are some quick tests to troubleshoot my unit?

Sometimes a few quick tests at home can be the difference between thinking your unit is broken and getting it working properly. Here is a list of quick trouble-shooting steps to test your gear and unit. As basic as these sound please run all the tests.

- **Check simple signal chain:** Plug your cable from your guitar into your amp. If you have a direct connect tone go to step 2. If not you have a bad cable, guitar or amp.
- **Check 2nd cable:** Take your 2nd cable and switch it with the first cable. If you have sound, we now know both cables, your guitar and amp, work.
- **Check power:** Plug your amp into the same outlet that you're using to power your ADA product. If the amp turns on, then the outlet works. If not try another outlet to power your unit.
- **Check native ADA Signal Chain:** Plug the first cable from your guitar into your ADA product (input). Plug the 2nd cable between your ADA product (output) and into your amp. Make sure the ADA product is plugged into a working power source. DO NOT insert it in a pedal chain, i.e., do not introduce any other pedals into the signal chain. If your ADA product works, your pedal chain most likely has a problem. If you hear nothing, then there may be a problem with your individual unit. Please see the FAQ on how to get an RA number.

2. What do I do if my product is not working?

If your product is not working we STRONGLY suggest that you run a series of quick tests to troubleshoot the unit (see above). They may sound very basic, but it can save you time in getting your unit working and you back to playing. If you are an international (non-USA) customer, you must contact your local dealer and/or your national distributor for repair. If you are in the USA and the unit truly does not work, email support@adaamps.com to get a Return Authorization (RA) number from us.

3. What do I do after receiving my RA number?

You will need to box your unit, write your Return Authorization (RA) number on the outside of the shipping box in a large bold lettering, and send it to the address supplied with the RA you received from us. You are responsible for shipping to and from ADA, so please track and insure your parcels. ADA cannot be held responsible for parcels that are lost or damaged in the shipping process. ADA cannot accept your shipment if there is no RA number written on the outside of the box.

SERVICE

If your unit requires service, please go to our website's SERVICE page for information to help you find a solution to the problem you are having with your GCS-5. We have provided you with a step-by-step troubleshooting procedure to get you back up and running if you are experiencing a simple problem.

RETURNING UNITS FOR SERVICE

If you still need to send in your ADA product for service, YOU MUST FIRST GET A RETURN AUTHORIZATION NUMBER (RA) BEFORE YOU SHIP TO OUR SERVICE CENTER. Items shipped to us without an RA, will not be accepted by our Service Center and will be returned to you by the shipper. You can get an RA number by first contacting us online at: www.adaamps.com/service. **DO NOT SHIP YOUR GCS-5 TO OUR SERVICE CENTER BEFORE GETTING AN RA (Return Authorization Number) FROM US.**

WARRANTY

Your ADA GCS-5 is warranted against defects in material and workmanship for a period of three-hundred and sixty five (365) days from date of purchase. This warranty is to the original owner and is non-transferable. During the warranty period, ADA or its agent will, at its sole option, repair or replace defective parts and make necessary repairs to the product which is defective at no charge. If the failure is the result of misuse, abuse, accident or misapplication, ADA has no obligation to repair or replace the failed product. ADA retains the right to make such determination on the basis of factory inspection. ADA will not be responsible for any speaker or device damaged by the GCS-5. This warranty remains valid only if repairs are performed by ADA or its agent and provided that the serial number on the unit has not been defaced or removed. This warranty is expressly in lieu of all other warranties either expressed or implied. This warranty gives you specific rights. You may have other rights that vary from state to state in the U.S.